



Berrien • Cass • Van Buren

**Providing the skilled workforce  
to meet employers' needs**

1.800.533.5800 | 269.927.1799

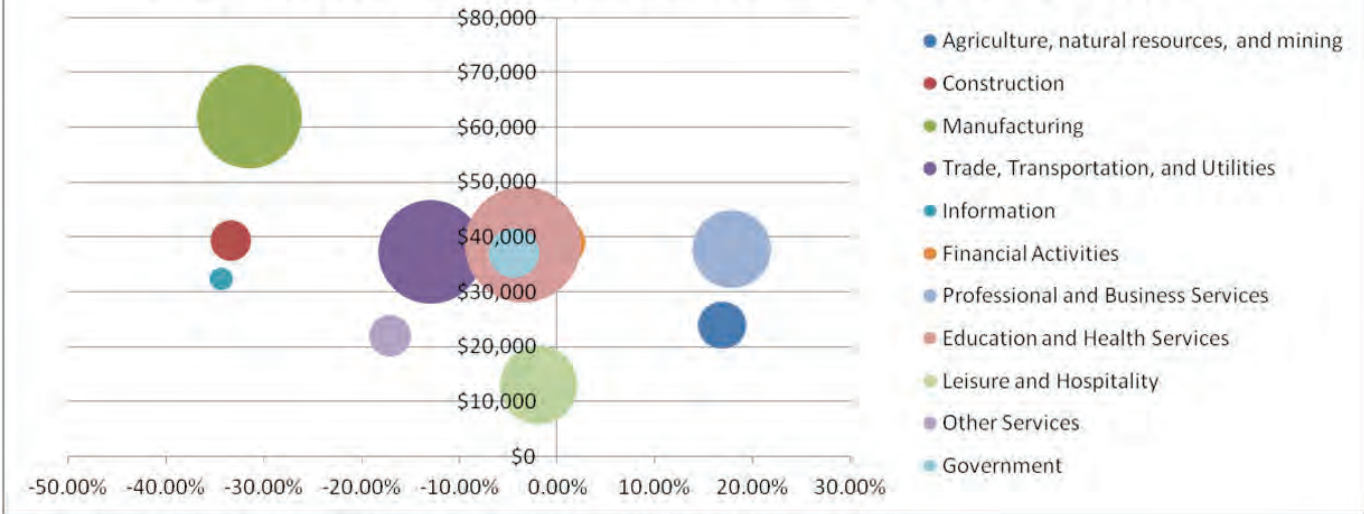
[www.miworks.org](http://www.miworks.org)

Michigan Works! is an Equal Opportunity Employer / Program. Auxiliary aids and services are available upon request for individuals with disabilities. Michigan Relay Center: 1-800-649-3777 Voice and TDD.

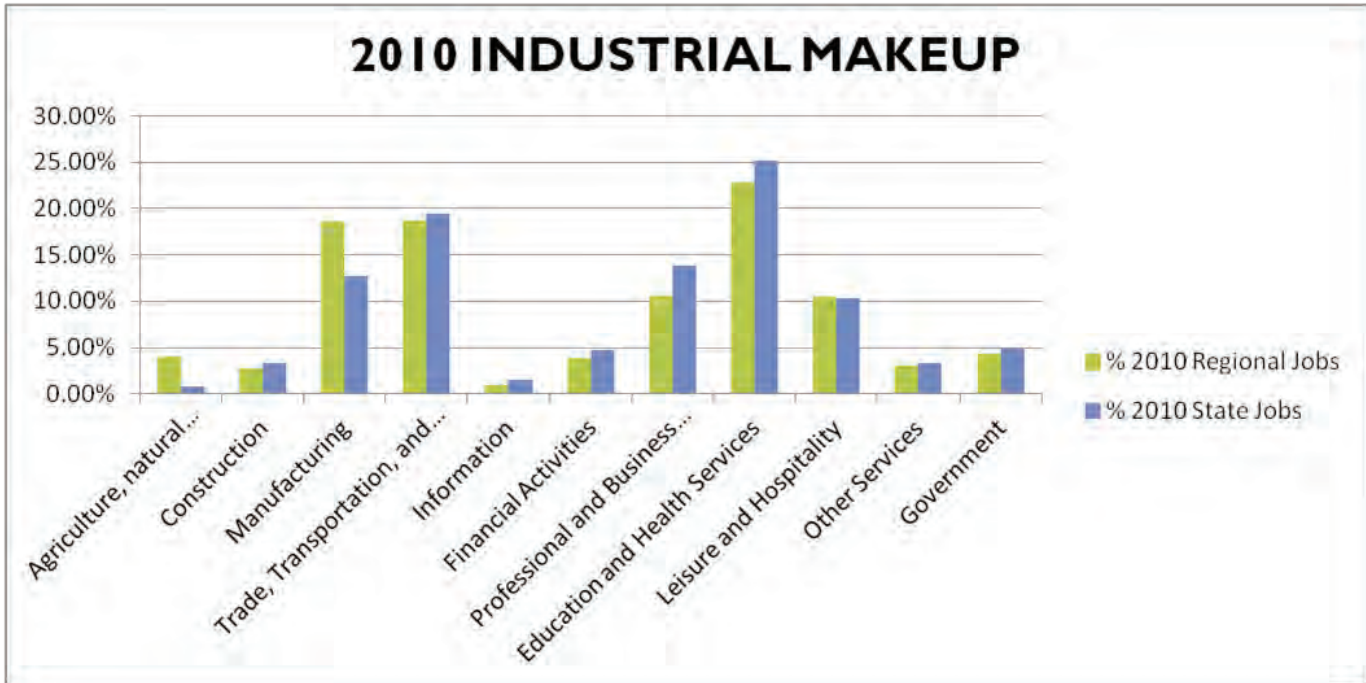
# Industry Overview Report

**SUMMER 2011**

## 2002-2010 INDUSTRY SIZE, GROWTH AND WAGES



| DESCRIPTION                               | 2002 JOBS     | % 2002 JOBS | 2010 JOBS     | % 2010 JOBS | GROWTH         | % GROWTH       | 2010 AVERAGE ANNUAL PAY |
|---|---------------|-------------|---------------|-------------|----------------|----------------|-------------------------|
| Agriculture, Natural Resources and Mining | 2,924         | 3.04%       | 3,416         | 4.00%       | 492            | 16.83%         | \$23,937                |
| Construction                              | 3,579         | 3.72%       | 2,386         | 2.80%       | -1,193         | -33.33%        | \$39,315                |
| Manufacturing                             | 23,096        | 23.98%      | 15,833        | 18.55%      | -7,263         | -31.45%        | \$61,933                |
| Trade, Transportation, and Utilities      | 18,345        | 19.05%      | 15,978        | 18.72%      | -2,367         | -12.90%        | \$37,301                |
| Information                               | 1,208         | 1.25%       | 793           | 0.93%       | -415           | -34.35%        | \$32,392                |
| Financial Activities                      | 3,298         | 3.42%       | 3,312         | 3.88%       | 14             | 0.42%          | \$39,012                |
| Professional and Business Services        | 7,654         | 7.95%       | 9,021         | 10.57%      | 1,367          | 17.86%         | \$37,796                |
| Education and Health Services             | 20,147        | 20.92%      | 19,438        | 22.77%      | -709           | -3.52%         | \$38,644                |
| Leisure and Hospitality                   | 9,113         | 9.46%       | 8,941         | 10.47%      | -172           | -1.89%         | \$13,008                |
| Other Services                            | 3,115         | 3.23%       | 2,583         | 3.03%       | -532           | -17.08%        | \$21,951                |
| Government                                | 3,833         | 3.98%       | 3,664         | 4.29%       | -169           | -4.41%         | \$37,043                |
| <b>Totals</b>                             | <b>96,312</b> |             | <b>85,365</b> |             | <b>-10,947</b> | <b>-11.37%</b> |                         |



| DESCRIPTION                               | 2010 REGIONAL JOBS | % 2010 REGIONAL JOBS | 2010 STATE JOBS  | % 2010 STATE JOBS |
|---|--------------------|----------------------|------------------|-------------------|
| Agriculture, Natural Resources and Mining | 3,416              | 4.00%                | 32,128           | 0.86%             |
| Construction                              | 2,386              | 2.80%                | 124,397          | 3.31%             |
| Manufacturing                             | 15,833             | 18.55%               | 475,226          | 12.65%            |
| Trade, Transportation, and Utilities      | 15,978             | 18.72%               | 731,160          | 19.47%            |
| Information                               | 793                | 0.93%                | 59,008           | 1.57%             |
| Financial Activities                      | 3,312              | 3.88%                | 178,896          | 4.76%             |
| Professional and Business Services        | 9,021              | 10.57%               | 517,959          | 13.79%            |
| Education and Health Services             | 19,438             | 22.77%               | 943,330          | 25.12%            |
| Leisure and Hospitality                   | 8,941              | 10.47%               | 385,920          | 10.28%            |
| Other Services                            | 2,583              | 3.03%                | 122,537          | 3.26%             |
| Government                                | 3,664              | 4.29%                | 184,930          | 4.92%             |
| <b>Totals</b>                             | <b>85,365</b>      |                      | <b>3,755,491</b> |                   |

## **SOURCES**

### **Industry Size, Growth and Wages Data**

Industry size and growth data was found from the Quarterly Census of Employment and Wages program's State and County Wages database within the U.S. Bureau of Labor Statistics. <http://www.bls.gov/cew/>